

# ClearLink Overview

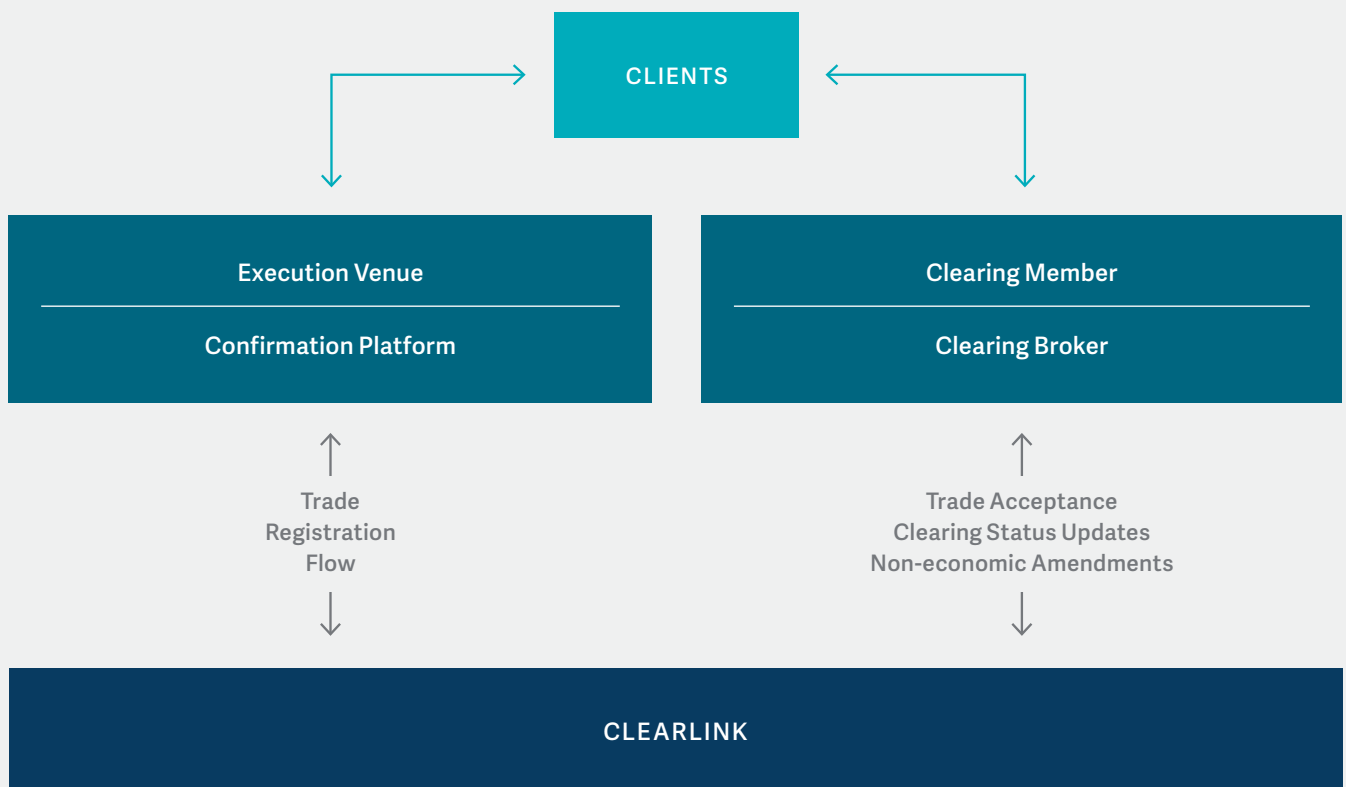
This guide is designed to give parties interested in connecting to the LCH ForexClear (LCH.FXC) Service a high-level overview of LCH's OTC Clearing Service Direct Connectivity protocol, ClearLink.

## DIRECT CONNECTIVITY

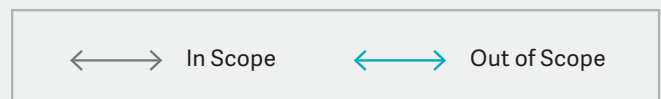
ClearLink provides an interface mechanism for Market Participants and Market Infrastructure to interact with LCH's OTC Clearing services. It consists of following:

01. A messaging standard that describes the format and the content of messages that are supported by ClearLink.
02. A specification of the messaging interactions supported by ClearLink.
03. A specification of products supported by ClearLink.

The figure below provides a high-level view of ClearLink:



**Figure 1.** ClearLink Overview



## DIRECT CONNECTIVITY

The ForexClear ClearLink Messaging Specification (available on LCH Secure Area) covers the following messaging specification.

Party Role	Business Processes	Message Specification
Confirmation Platform	Trade Registration Trade Cancellation	requestClearing clearingAcknowledgement clearingConfirmed clearingRefused  clearingStatus messageRejected
	Non-economic Updates	requestTradeReferenceInformationUpdate tradeReferenceInformationUpdateAcknowledgement tradeReferenceInformationUpdateException messageRejected
FCM	Trade Take-up Consent	requestConsent consentAcknowledgement consentGranted consentRefused
	Collateral Allocation	requestCollateralAllocation collateralAllocationAcknowledgement collateralAllocationAccepted collateralAllocationRejected

**Table 1.** ClearLink Specification Scope

ClearLink is based on FpML (Financial products Markup Language), which is an industry-standard protocol for complex financial products. FpML is based on XML (eXtensible Markup Language), a standard meta-language for describing data shared between applications.

**Only the following FpML message types are accepted by ClearLink:**

01. requestClearing
02. consentAcknowledgement
03. consentGranted
04. consentRefused
05. clearingAcknowledgement
06. requestCollateralAllocation
07. requestTradeReferenceInformationUpdate

## DIRECT CONNECTIVITY

---

ClearLink only sends the following FpML message types:

- |  |   |
|--|---|
| 01. clearingAcknowledgement                        | 07. messageRejected                     |
| 02. clearingRefused                                | 08. requestConsent                      |
| 03. clearingStatus                                 | 09. consentAcknowledgement              |
| 04. clearingConfirmed                              | 10. collateralAllocationAcknowledgement |
| 05. tradeReferenceInformationUpdateAcknowledgement | 11. collateralAllocationAccepted        |
| 06. tradeReferenceInformationUpdateException       | 12. collateralAllocationRejected        |
- 

## PARTY ROLES

---

### 01.

#### Central Counterparty

This is the party who provides the CCP (Central Counterparty) role by novating the original trades. This role is carried out by LCH.FXC. This role is also referred to as the "clearer".

### 02.

#### Trade Source

This party identifies the source of the trade to the Clearing Service. This role is referred to as the "Trade Source". For LCH.FXC ClearLink this will be the confirmation platforms (trade matching platforms) only.

### 03.

#### Execution Venue

The facility where the trade was executed, such as a Swap Execution Facility (SEF).

### 04.

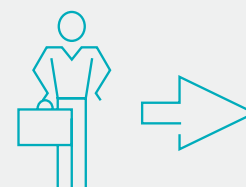
#### Clearing Broker / Futures Commission Merchant (FCM)

The Clearing Broker ("CB") / FCM is a financial institution that is a direct member of the Clearing House and is able to offer Client-clearing services to other parties. This role is referred to as "Clearing Broker".

### 05.

#### Client

A Client is the price-taking party in the original, bi-lateral transaction that will be cleared. They are typically buy-side financial institutions that are not direct members of the Clearing House, hence they need an intermediary to face the Clearing House on their behalf. This role is referred to as "Client".



## MESSAGE VALIDATION

01. ClearLink requires that messages conform to the FpML standard, 5.6 as stated above, and additionally adhere to business rules specified in the detailed specification document. Messages inbound are first validated against the FpML schema, and if successful, further validation is performed to ensure that the message conforms to the specified business rules. A non-conforming message shall be rejected by ClearLink, and a messageRejected message shall be sent to the sender informing of the reason for rejection.
02. ClearLink also requires that all participants exchanging messages via ClearLink perform their own message validation. ClearLink shall accept a messageRejected message from a participant as an indication that the message has been rejected due to non-conformance, and route this message to the clearing service.

## NETWORK ACCESS

The interconnection network between LCH.FXC and the Members is via IBM MQ messaging over a dedicated BT Radianz connection.



## FURTHER DOCUMENTATION

The ClearLink specification defines additional rules and restrictions that must be followed when creating the FpML messages. The detailed specification can be provided when onboarding, along with example messages, error codes, the products ClearLink supports, and connectivity related documentation.



## CONTACT US

### Clive Hadingham

Head of FX Sales

**Email** clive.hadingham@lseg.com

**Mobile** +44 (0) 7980 775371

**Phone** +44 (0) 20 7426 7631

**Email** lchsales@lseg.com

**Website** lch.com/services/forexclear

**Twitter**  @LCH\_Clearing

DISCLAIMER This document has been provided to you for informational purposes only and is intended as an overview of certain aspects of or proposed changes to the SwapClear, ForexClear, Listed Interest Rates, SwapAgent and/or any other service provided by LCH Group Holdings Limited ("LCH Group") or any of its group undertakings (group undertakings shall be construed in accordance with section 1161 of the Companies Act 2006; each an "LCH Group Company"). LCH Limited is supervised by the Bank of England within the UK regulatory framework, registered as a derivatives clearing organisation with the U.S. Commodity Futures Trading Commission ("CFTC") and recognised as a third-country CCP under Regulation (EU) No. 648/2012 of the European Parliament and of the Council of 4 July 2012 on OTC derivatives, central counterparties and trade repositories ("EMIR"). LCH SA is regulated and supervised in France by the Autorité des Marchés Financiers, the Autorité de Contrôle Prudentiel et de Résolution and the Banque de France, authorised as an E.U. CCP under EMIR, registered as a derivatives clearing organisation with the CFTC and as a clearing agency with the U.S. Securities and Exchange Commission. LCH Limited and LCH SA also hold licenses in other jurisdictions in which they offer their services. More information is available at [www.lch.com](http://www.lch.com). The relationship of an LCH Group Company with its members is governed solely by its rulebook and certain other ancillary documentation, as applicable. This document does not, and does not purport to, contain a detailed description of any aspect of a service provided by an LCH Group Company or any other topics discussed in this document, and it has not been prepared for any specific person. This document does not, and does not seek to, constitute advice of any nature. You may not rely upon the contents of this document under any circumstance and should seek your own independent legal, investment, tax and other advice. The information and any opinion contained in this document does not constitute a recommendation or offer with respect to any derivative contract, financial instrument, security or service. No LCH Group Company makes any representation, warranty, condition or guarantee (whether express or implied) that the contents of this document are accurate, complete or up-to-date, and makes no commitment to offer any particular product or service. No LCH Group Company shall have any liability for any losses, claims, demands, actions, proceedings, damages, costs or expenses arising out of, or in any way connected with, the information contained in this document, except that each LCH Group Company accepts liability that cannot be excluded by applicable law. Copyright © LCH Limited 2022. All rights reserved. SwapClear, ForexClear and SwapAgent are registered trademarks of LCH. The information contained in this document is confidential. By reading this document, each recipient agrees to treat it in a confidential manner and will not, directly or indirectly, disclose or permit the disclosure of any information in this document to any other person (other than its regulators or professional advisers who have been informed of the confidential nature of the information) without the prior written consent of LCH Group Company.