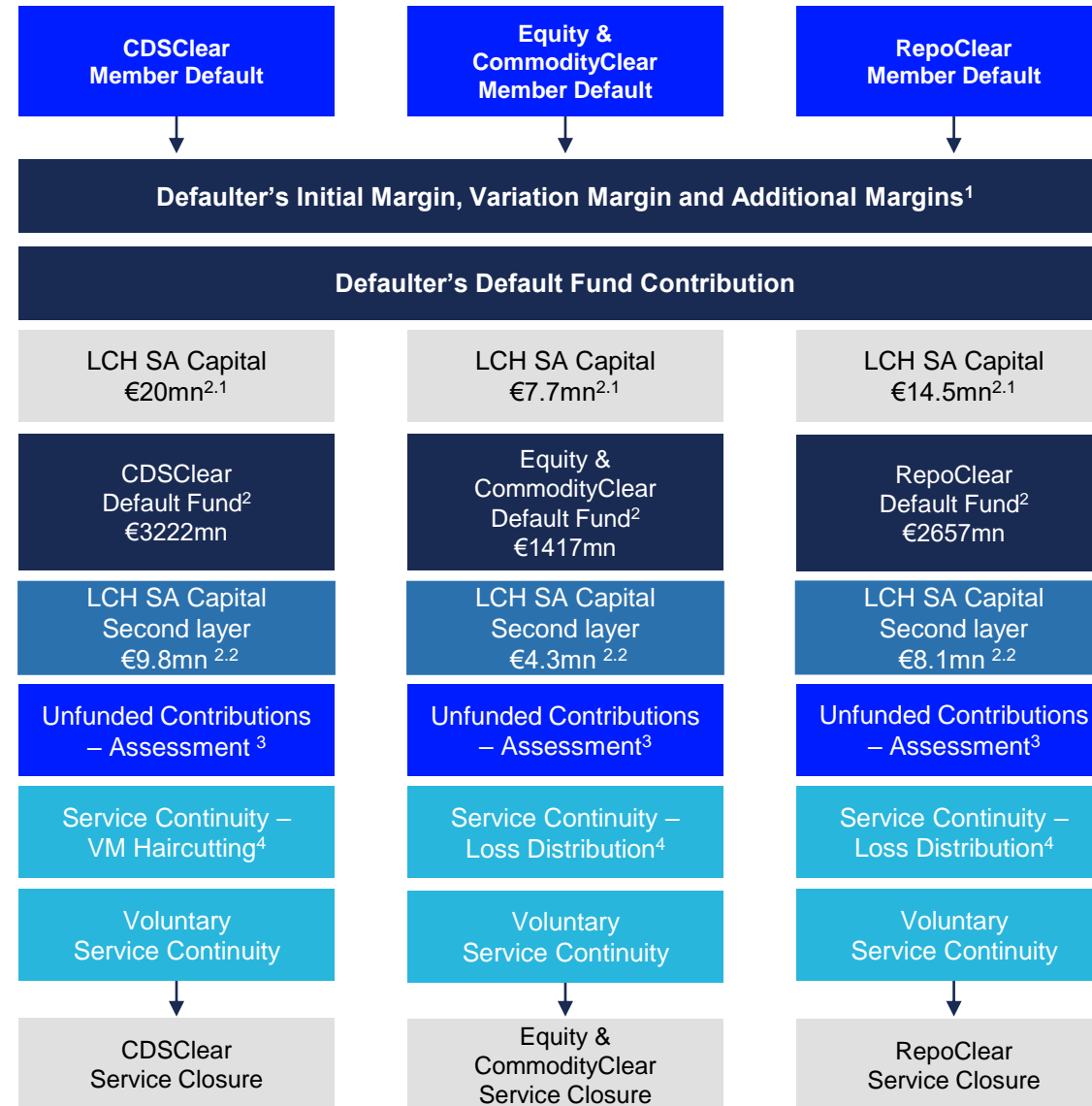


LCH SA Default Waterfall



1. LCH SA held margin collateral with a market value of €60.9 Bn on the 29th of December 2023. (Default Funds not included)
2. The size of each prefunded Default Fund and an indicative allocation of dedicated capital are as at 29th of December
First layer of skin in the game
Second layer of skin in the game
3. Assessments are callable up to the value of each member's Default Fund contribution at the time of the default.
4. Further resources are available in the Service Continuity phase as determined by the [LCH SA Rulebook](#).