

LCH

Collateral analyser

Your one-stop shop for collateral information



LSEG POST
TRADE

The challenge

LCH Collateral Analyser is a one-stop shop for your collateral and liabilities across LCH clearing services, with the ability to aggregate up and drill down to see the most granular details.

1

Excess collateral

Lack of visibility into excess collateral and inadequate analysis of how much is required results in collateral being tied up unnecessarily

2

Expensive collateral

- Without pre-pledge analytics for your LCH costs, opportunities to post cheaper collateral are missed
- Set limits for higher-cost assets being pledged in a low NTI environment

3

Costly funding

- Reduce funding costs on haircuts for securities and cash
- Optimise cash/securities posting and save actual PnL

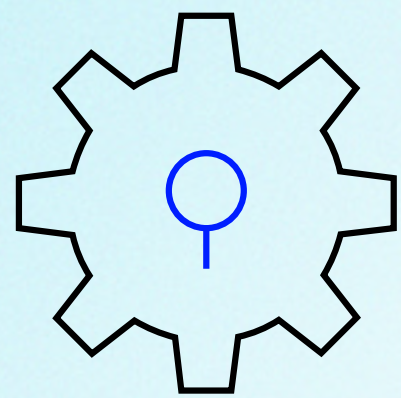
4

Missed opportunities

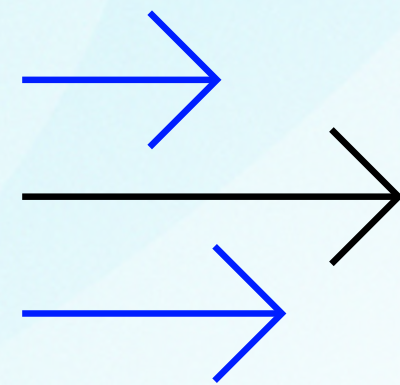
- Inability to earn on excess and unoptimised haircuts creates missed opportunity cost
- Without access to real-time collateral limits, opportunities to optimise the cost of client flow and house collateral are missed

The solution

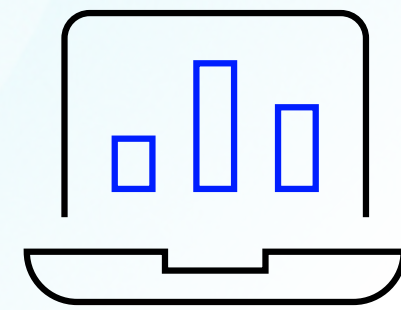
LCH Collateral Analyser is one of the new data and analytics experiences we have developed for and with the markets to help LCH members and clients free up resources and reinvest in new opportunities.



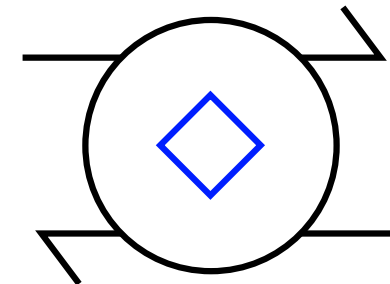
Collateral and liability in a one-stop shop user interface



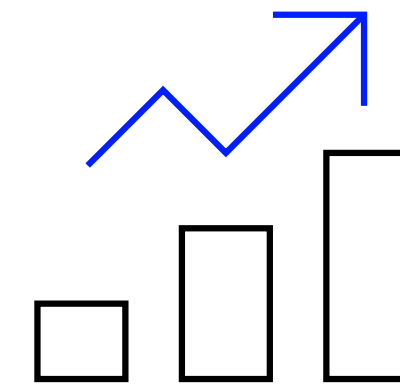
Coverage and excess collateral



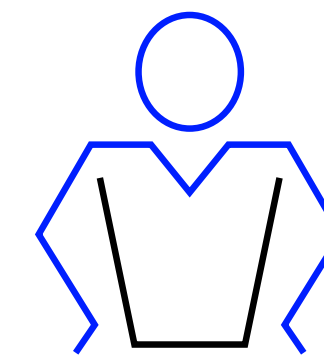
Monitoring utilisation within LCH limits



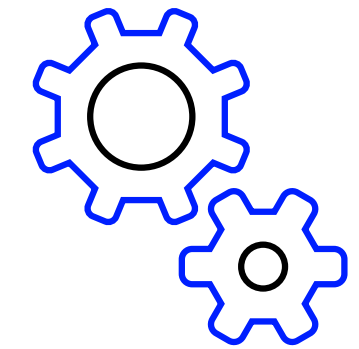
Early indication of cash requirement



Pre-Pledge Analytics



Graphical User Interface Access for humans



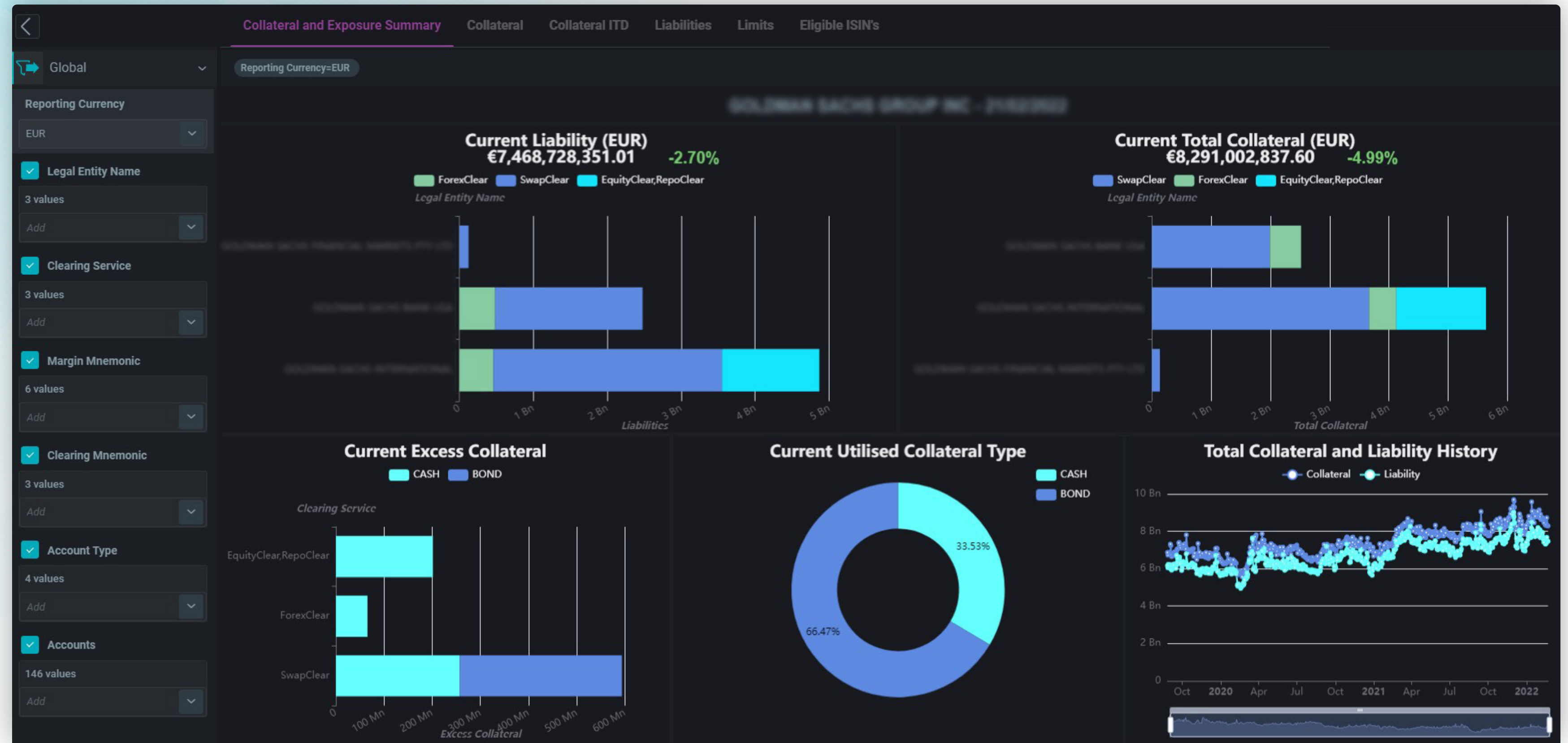
API Access for computers and other Applications

In action

01. Reporting Aggregate

See your holistic and granular collateral and liability with the Reporting Aggregate module.

- See intraday exposures across LCH
- Avoid sub-optimal collateral utilisation
- Identify optimal levels of excess historically and factor into future planning
- Pledge efficient collateral levels
- Save opportunity costs through optimal reinvestment
- Access an API with intraday and historical data



In action

02. Limits

See your LCH risk constraints and utilisation intraday with the Limits module.

- Drill down to find the reason for a driving position
- Reduce time needed to estimate capacity against group and entity limits by half a day, every day, for personnel involved in cash management, concentration management and client flow management*
- Reduce any long-term RWA exposure and improve return on capital
- Act fast to reduce leverage and capital impact
- Optimise your cash split early in the day with in-tool cash requirements (SLCR) published at 7am BST
- Access an API with intraday and real-time data



*Estimate based on LCH Member feedback.

In action

03. Eligible Collateral

Pre-pledge analyse the cost of pledging collateral against LCH constraints with the Eligible Collateral module.

- Forecast fees and haircuts with the eligible collateral in your inventory
- Create and compare various collateral combinations
- Create funding simulations across your choice of LCH accounts and calculate the likely cost of collateral funding over the next 5, 10, or 15+ years
- Save an indicative c.200k EUR funding cost per billion of average collateral*
- Access an API with intraday and historical data

The screenshot shows the 'Eligible ISIN's' section of the LCH Collateral Analyser. The interface includes a navigation bar with tabs for 'Collateral and Exposure Summary', 'Collateral', 'Collateral ITD', 'Liabilities', 'Limits', and 'Eligible ISIN's'. On the left, there are filters for 'Local', 'Margin Mnemonic', and 'Sub Account'. The main table displays the following data:

Clearing Mnemonic	Clearing Service	Currency of Risk	Account Type						
	EquityClear,RepoClear	GBP	House						
Concentration Limit Type	Issuer	Country Code ISO	Currency	Security	Subaccount	Maturity Date	Expected Haircut	FX Haircut	Bilateral Spread (bps)
	AUSTRALIAN GOVERNMENT AUSTRALIA	AU	AUD	AU0000XCLWP8	H	2025-09-20T00:00:00Z	2.25%	5.50%	11
	AUSTRALIAN GOVERNMENT AUSTRALIA	AU	AUD	AU0000XCLWAF4	H	2035-08-21T00:00:00Z	6.88%	5.50%	11
	AUSTRALIAN GOVERNMENT AUSTRALIA	AU	AUD	AU0000018442	H	2041-05-21T00:00:00Z	6.88%	5.50%	11
	AUSTRALIAN GOVERNMENT AUSTRALIA	AU	AUD	AU0000XCLWAG2	H	2033-04-21T00:00:00Z	6.88%	5.50%	11
	AUSTRALIAN GOVERNMENT AUSTRALIA	AU	AUD	AU0000097495	H	2051-06-21T00:00:00Z	6.88%	5.50%	11
	AUSTRALIAN GOVERNMENT AUSTRALIA	AU	AUD	AU0000XCLWAW9	H	2022-11-21T00:00:00Z	0.63%	5.50%	11
	AUSTRALIAN GOVERNMENT AUSTRALIA	AU	AUD	AU0000083768	H	2024-11-21T00:00:00Z	1.00%	5.50%	11
	AUSTRALIAN GOVERNMENT AUSTRALIA	AU	AUD	AU0000087454	H	2030-12-21T00:00:00Z	2.75%	5.50%	11
	AUSTRALIAN GOVERNMENT AUSTRALIA	AU	AUD	AU0000XCLWA18	H	2026-04-21T00:00:00Z	2.25%	5.50%	11
	AUSTRALIAN GOVERNMENT AUSTRALIA	AU	AUD	AU0000XCLWAR9	H	2028-05-21T00:00:00Z	2.25%	5.50%	11
	AUSTRALIAN GOVERNMENT AUSTRALIA	AU	AUD	AU0000075681	H	2032-05-21T00:00:00Z	2.75%	5.50%	11
	AUSTRALIAN GOVERNMENT AUSTRALIA	AU	AUD	AU0000101792	H	2031-11-21T00:00:00Z	2.75%	5.50%	11
	AUSTRALIAN GOVERNMENT AUSTRALIA	AU	AUD	AU0000XCLWAS7	H	2047-03-21T00:00:00Z	6.88%	5.50%	11
	AUSTRALIAN GOVERNMENT AUSTRALIA	AU	AUD	AU0000XCLWAV1	H	2027-11-21T00:00:00Z	2.25%	5.50%	11
	AUSTRALIAN GOVERNMENT AUSTRALIA	AU	AUD	AU2CLT110322	H	2022-03-11T00:00:00Z	0.63%	5.50%	11
	AUSTRALIAN GOVERNMENT AUSTRALIA	AU	AUD	AU0000013740	H	2030-05-21T00:00:00Z	2.75%	5.50%	11

Access today Members can now access the LCH Collateral Analyser in the LCH Portal or via an API.

*Calculated from collateral and exposure summary data, taking into account fees and haircuts.

LCH

LCH. The Markets' Partner.

LCH builds strong relationships with commodity, credit, equity, fixed income, foreign exchange (FX) and rates market participants to help drive superior performance and deliver best-in-class risk management.

As a member or client, partnering with us helps you increase capital and operational efficiency, while adhering to an expanding and complex set of cross-border regulations, thanks to our experience and expertise.

Working closely with our stakeholders, we have helped the market transition to central clearing and continue to introduce innovative enhancements. Choose from a variety of solutions such as compression, sponsored clearing, credit index options clearing, contracts for differences clearing and LCH SwapAgent for managing uncleared swaps. Our focus on innovation and our uncompromising commitment to service delivery make LCH, an LSEG business, the natural choice of the world's leading market participants globally.

Disclaimer

This document has been provided to you for informational purposes only and is intended as an overview of certain aspects of, or proposed changes to, the SwapClear, Listed Interest Rates, SwapAgent and/or any other service provided by LCH Group Holdings Limited ("LCH Group") or any of its group undertakings (group undertakings shall be construed in accordance with section 1161 of the Companies Act 2006; each an ("LCH Group Company").

LCH Limited is supervised by the Bank of England within the UK regulatory framework, registered as a derivatives clearing organisation with the U.S. Commodity Futures Trading Commission ("CFTC") and recognised as a third-country CCP under Regulation (EU) No. 648/2012 of the European Parliament and of the Council of 4 July 2012 on OTC derivatives, central counterparties and trade repositories ("EMIR"). LCH S.A. is regulated and supervised in France by the Autorité des Marchés Financiers, the Autorité de Contrôle Prudentiel et de Résolution and the Banque de France, authorised as an E.U. CCP under EMIR, registered as a derivatives clearing organisation with the CFTC and as a clearing agency with the U.S. Securities and Exchange Commission. LCH Limited and LCH S.A. also hold licenses or authorisations in other jurisdictions in which they offer their services. More information is available at www.lch.com.

The relationship of an LCH Group Company with its members is governed solely by its rulebook and certain other ancillary documentation, as applicable. This document does not, and does not purport to, contain a detailed description of any aspect of a service provided by an LCH Group Company or any other topics discussed in this document, and it has not been prepared for any specific person. This document does not, and does not seek to, constitute advice of any nature. You may not rely upon the contents of this document under any circumstance and should seek your own independent legal, investment, tax and other advice. The information and any opinion contained in this document does not constitute a recommendation or offer with respect to any derivative contract, financial instrument, security or service. No LCH Group Company makes any representation, warranty, condition or guarantee (whether express or implied) that the contents of this document are accurate, complete or up to date, and makes no commitment to offer any particular product or service. No LCH Group Company shall have any liability for any losses, claims, demands, actions, proceedings, damages, costs or expenses arising out of, or in any way connected with, the information contained in this document, except that each LCH Group Company accepts liability that cannot be excluded by applicable law.

Copyright © LCH Limited 2023. All rights reserved. Copyright © LCH S.A. 2023. All rights reserved. LCH SwapClear, LCH CDSClear, LCH ForexClear, LCH RepoClear, LCH EquityClear, LCH SwapAgent and €GCPlus are registered trademarks of LCH.

The information contained in this document is **confidential**. By reading this document, each recipient agrees to treat it in a confidential manner and will not, directly or indirectly, disclose or permit the disclosure of any information in this document to any other person (other than its regulators or professional advisers who have been informed of the confidential nature of the information) without the prior written consent of the relevant LCH Group Company to whom such confidential information belongs.

Contact us

For more information on Collateral analyser, please contact your sales team representative, email lchsales@lch.com.

