

# Improve settlement performance with accurate data and analytics

LCH RepoClear's Settlement Monitor is a new risk analytics Settlement tool for the repo market and a "tower of control" for real-time monitoring and targeted operational action.

## The challenge

### 01.

Complex and fragmented market

The European market remains complex and fragmented when it comes to its settlement landscape.

### 02.

High settlement fails

In the immediate aftermath of CSDR implementation in February 2022 we witnessed a sustained level of high settlement fails, which will take time to reabsorb.

### 03.

Direct and indirect costs

This repetitive high fail rate is creating direct and indirect costs downstream.

### 04.

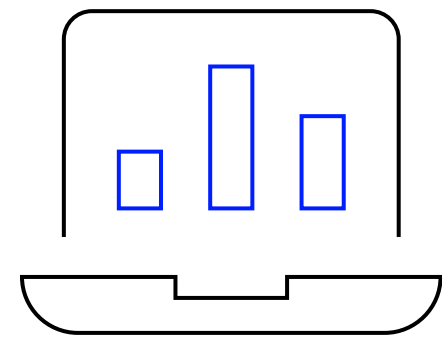
Loss of control

Operations and business teams need greater visibility and control to optimise the chance to properly settle trades and get deliveries back.

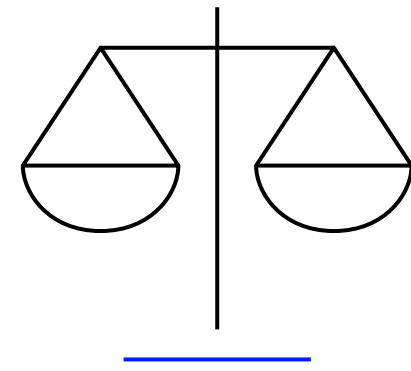


## The solution

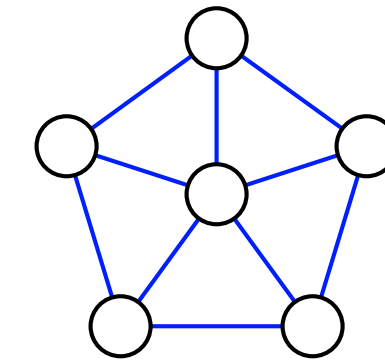
Working in partnership is more essential than ever if we are to drive settlement efficiency, provide visibility and control and de-fragment the marketplace. In this spirit, LCH RepoClear offers you the Settlement Monitor, providing 360-degree visibility and control across all your upstream trading venues and downstream settlement locations – and allowing you to perform meaningful analysis of settlement fails.



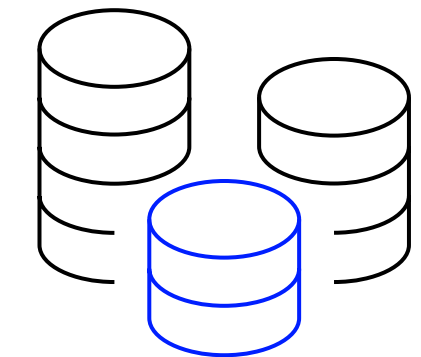
**Digitised  
operational  
workflows**



**Scalability and  
efficiency gains**



**Connected assets  
in an integrated  
solution**



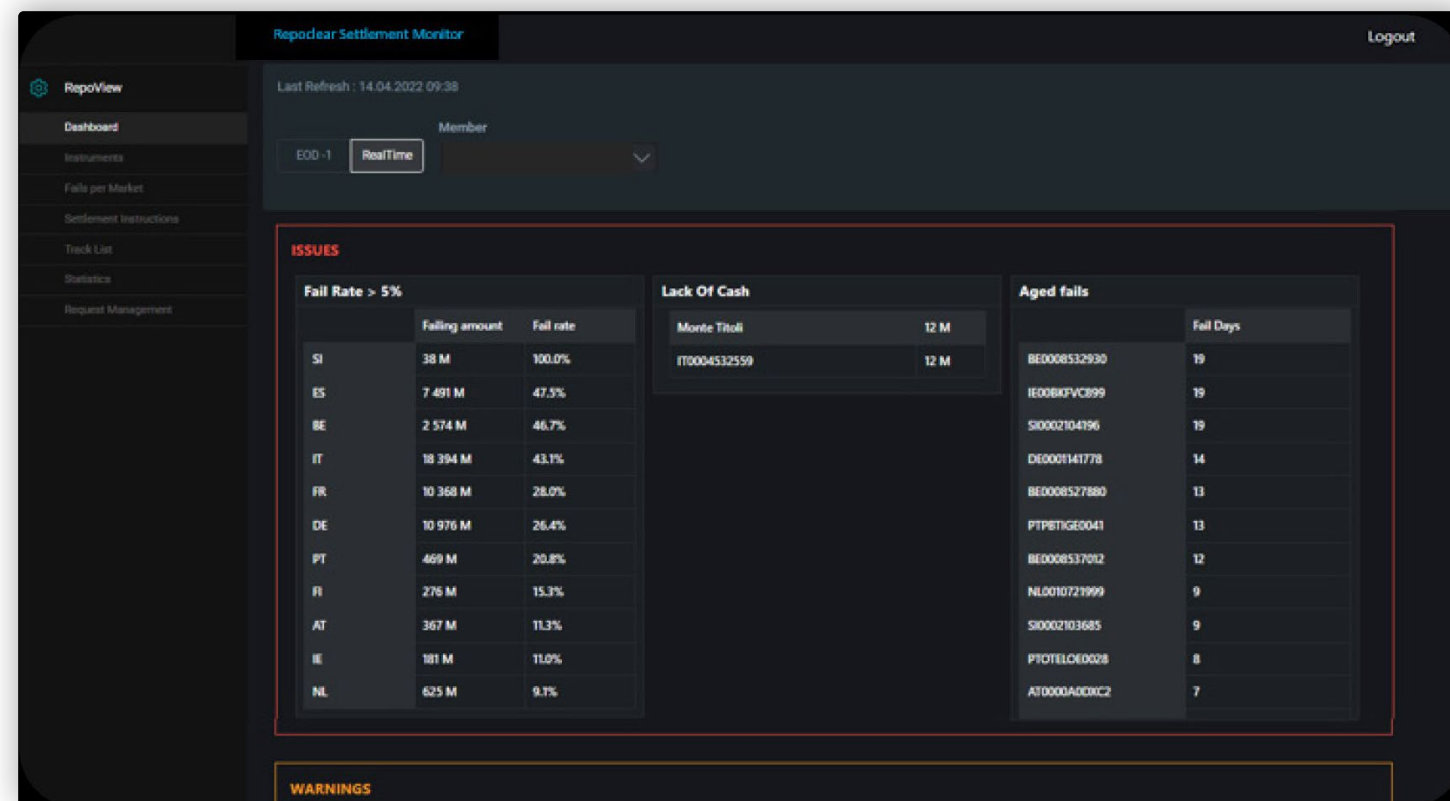
**Reduced  
operational cost**

## In action

### 01.

#### Real time dashboards

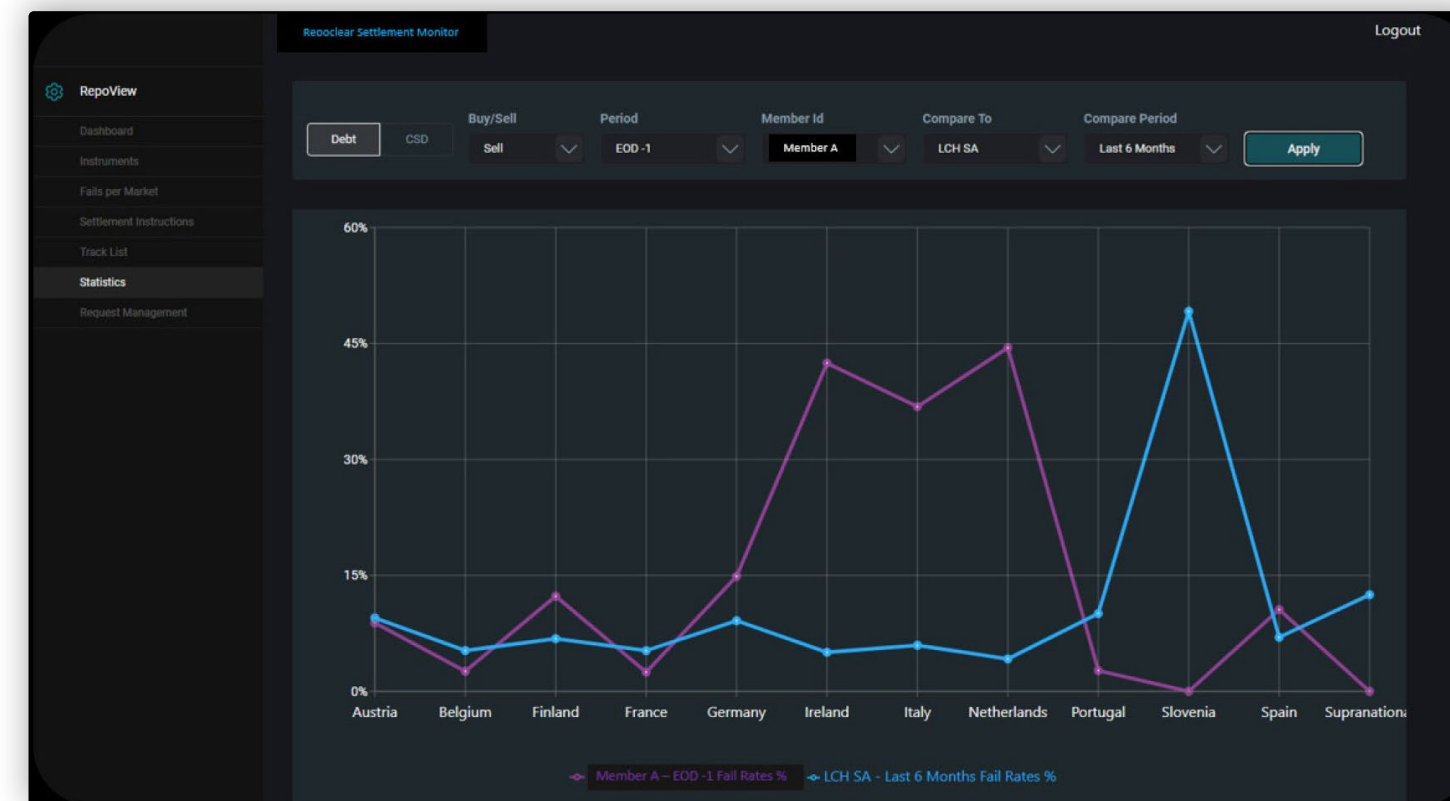
Leverage LCH's open-access model to see real-time fails and settlement activity.



### 02.

#### Real time and historical data

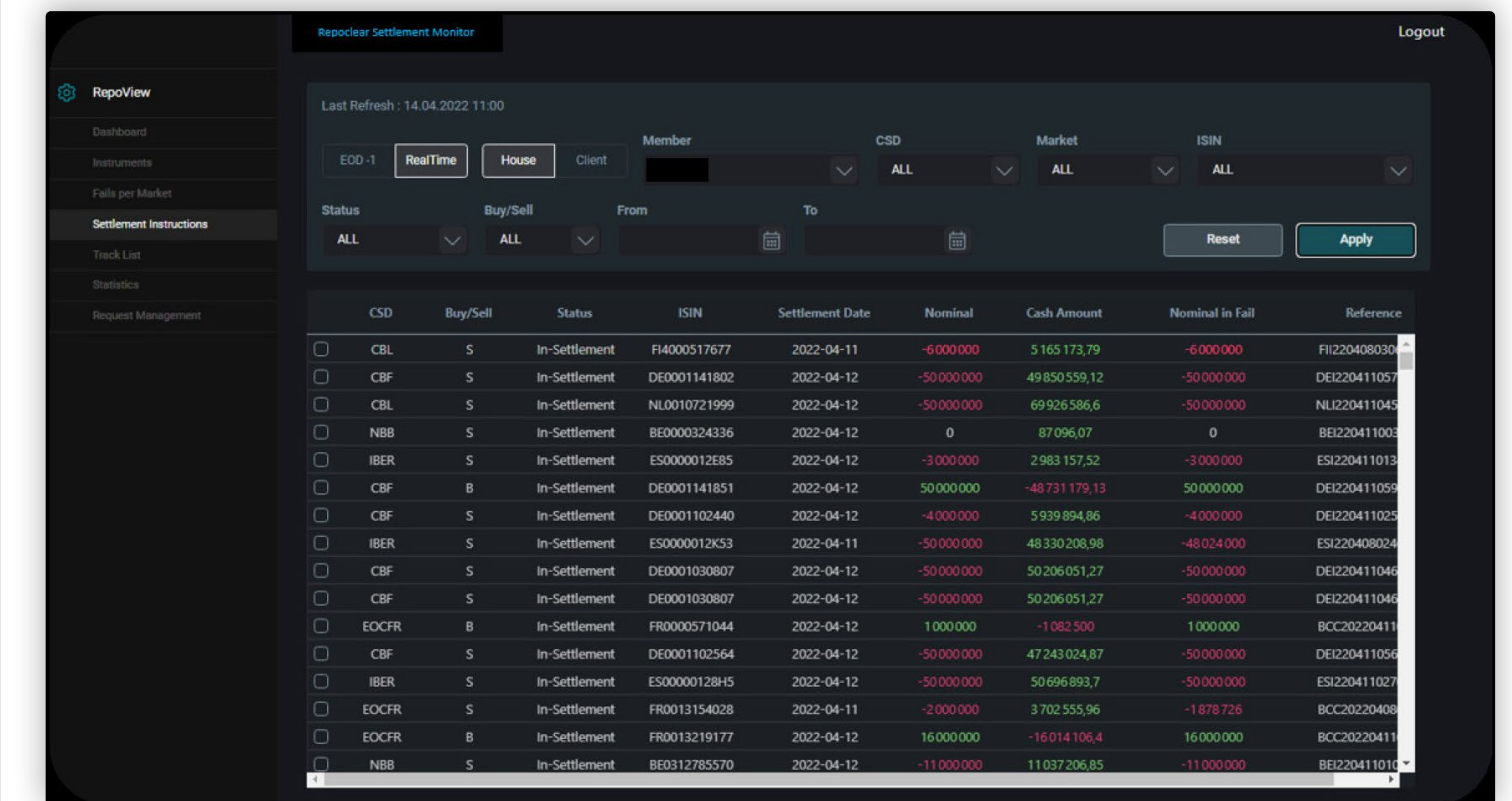
Data and analytics in an integrated solution provide you with trends, benchmarking and performance indicators.



### 03.

#### Help with regulatory compliance

Settlement Monitor gives you control and access to optimised solutions to tackle CSDR challenges.



Free trial | LCH RepoClear members can access a complimentary 30-day trial of the new Settlement Monitor tool.



Contact us

Email [lchsales@lseg.com](mailto:lchsales@lseg.com)

Visit [lch.com](http://lch.com)

## Disclaimer

This document has been provided to you for informational purposes only and is intended as an overview of certain aspects of, or proposed changes to, the SwapClear, Listed Interest Rates, SwapAgent and/or any other service provided by LCH Group Holdings Limited ("LCH Group") or any of its group undertakings (group undertakings shall be construed in accordance with section 1161 of the Companies Act 2006; each an ("LCH Group Company").

LCH Limited is supervised by the Bank of England within the UK regulatory framework, registered as a derivatives clearing organisation with the U.S. Commodity Futures Trading Commission ("CFTC") and recognised as a third-country CCP under Regulation (EU) No. 648/2012 of the European Parliament and of the Council of 4 July 2012 on OTC derivatives, central counterparties and trade repositories ("EMIR"). LCH S.A. is regulated and supervised in France by the Autorité des Marchés Financiers, the Autorité de Contrôle Prudentiel et de Résolution and the Banque de France, authorised as an E.U. CCP under EMIR, registered as a derivatives clearing organisation with the CFTC and as a clearing agency with the U.S. Securities and Exchange Commission. LCH Limited and LCH S.A. also hold licenses or authorisations in other jurisdictions in which they offer their services. More information is available at [www.lch.com](http://www.lch.com).

The relationship of an LCH Group Company with its members is governed solely by its rulebook and certain other ancillary documentation, as applicable. This document does not, and does not purport to, contain a detailed description of any aspect of a service provided by an LCH Group Company or any other topics discussed in this document, and it has not been prepared for any specific person. This document does not, and does not seek to, constitute advice of any nature. You may not rely upon the contents of this document under any circumstance and should seek your own independent legal, investment, tax and other advice. The information and any opinion contained in this document does not constitute a recommendation or offer with respect to any derivative contract, financial instrument, security or service. No LCH Group Company makes any representation, warranty, condition or guarantee (whether express or implied) that the contents of this document are accurate, complete or up-to-date, and makes no commitment to offer any particular product or service. No LCH Group Company shall have any liability for any losses, claims, demands, actions, proceedings, damages, costs or expenses arising out of, or in any way connected with, the information contained in this document, except that each LCH Group Company accepts liability that cannot be excluded by applicable law.

Copyright © LCH Limited 2023. All rights reserved. Copyright © LCH S.A. 2023. All rights reserved. LCH SwapClear, LCH CDSClear, LCH ForexClear, LCH RepoClear, LCH EquityClear, LCH SwapAgent and €GCPlus are registered trademarks of LCH.